



# HOW TO ACCESS YOUR DOSS DVR REMOTELY

**Please note:**

These instructions are based on the DOSS DVR models: RPDVR4CH, RPDVR8CH, and RPDVR16CH. However, the basic principles still apply.

Accessing your DOSS DVR from your local network is easy by pointing your PC or phone to the DVR's local IP address. However, if you want to access your device remotely, then you need to setup port forwarding and use your modem/ router's external IP address.

First you need to find the IP address for your DVR, make a note of it, and make sure that your modem/ router is forwarding all requests to view your DVR correctly. Write down the relevant information in the allocated fields before you begin:

## Your DVR's IP Address and Port Numbers:

### Find your DVR IP address:

You can quickly determine the IP address of your DVR from the front panel LCD display. You have to make sure that your DVR is in the same subnet of your router. If it is not, you have to assign a proper local IP address. The easiest method is to enable DHCP on your DVR. To do so, make sure your mouse is attached to your DVR: Right click and choose Main Menu (Default username: admin/ password: 123456)

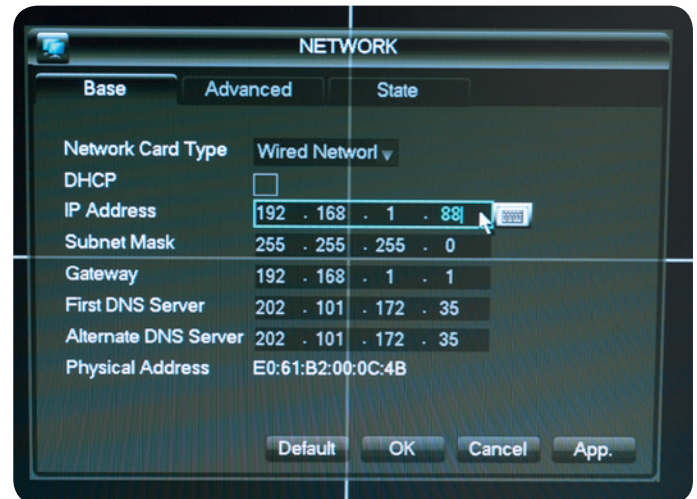
Choose CONFIGURATION > NETWORK

Make sure DHCP is checked.

You may also assign a static IP that is within the same IP range as your router (ie. 192.168.1.XXX)

### Find the PORT numbers:

Choose the ADVANCED tab and then click on MULTICAST



.
.
.

IP ADDRESS [DVR]

.

.

TCP PORT

HTTP PORT

There may be other devices or settings that may prevent you from accessing your DVR using the default port numbers. If that is the case, try changing the port numbers for both TCP and HTTP to something else (e.g. 9998 and 9090).

## Your EXTERNAL IP Address:

Get it online by visiting:

<http://whatismyip.com>

.
.
.

What Is My IP Address - WhatIsMyIP.com

**Your IP Address Is: 202.219.241.235**

example

## Access details to your modem/ router

including its IP address (eg. 192.168.1.1, 10.1.1.1) and the username and password to modify settings.

(consult your modem/ router user manual or try: <http://www.routerpasswords.com> for default passwords for common routers)

Once you have all the information above, you then need to forward all requests that come on a specific port to your DVR.

Port forwarding settings vary greatly from one modem/ router to another and it is impossible to cover that here. The following website lists almost all modem/ routers available on the market, so to find instructions specific to your brand and model, please visit:

[http://portforward.com/english/routers/port\\_forwarding/routerindex.htm](http://portforward.com/english/routers/port_forwarding/routerindex.htm)

Find your particular modem/ router from the brand and model list. You just need to figure out where to find the port forwarding settings on your modem/ router's configuration page, so choose HTTP from the programs list just as a starting point, and ignore everything else on that page.

Once you are in your router/ modem's Port Forwarding page, you need to create two entries for both the HTTP PORT and TCP PORT to point to your DVR.

Put in the IP ADDRESS and the HTTP PORT that you got from your DVR.

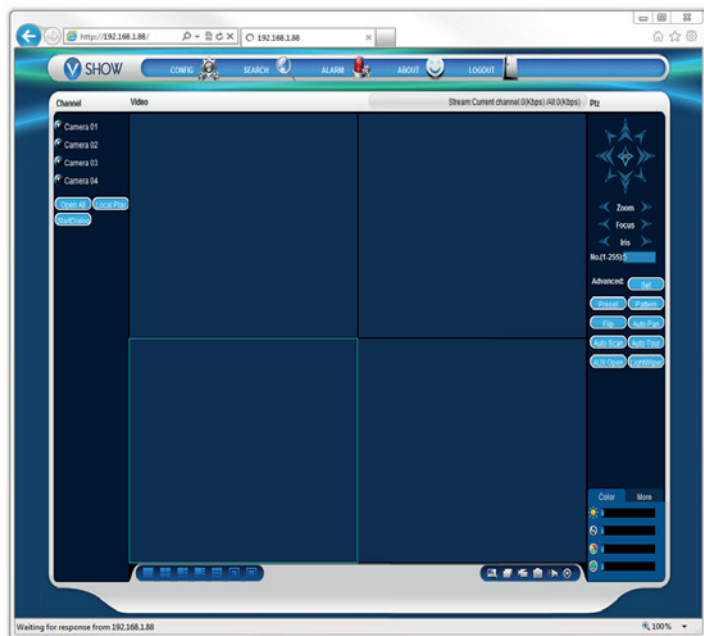
Create another entry and put in the same address, but this time input the TCP PORT you got from your DVR.

### Port Forwarding

On	Proto	Src Address	Ext Ports	Int Port	Int Address	Description	
On	TCP		80		192.168.1.88	DVR HTTP	✖
On	TCP		8000		192.168.1.88	DVR TCP	

## TO ACCESS YOUR DVR REMOTELY

### WEB CLIENT



Using internet explorer, visit:

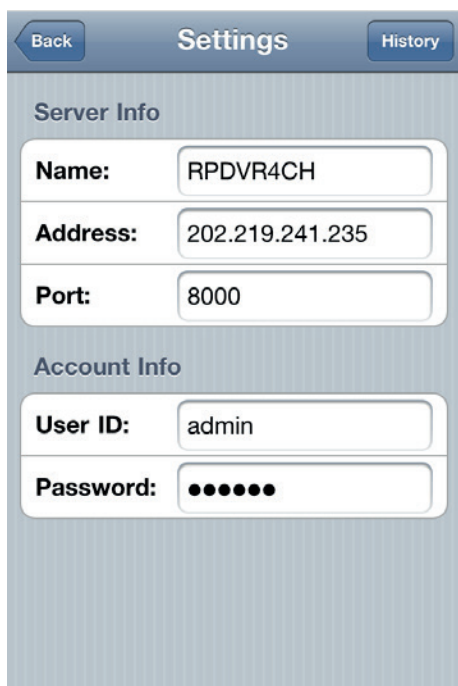
**HTTP://EXTERNALIPADDRESS:HTTPPORT**

for example: <http://202.219.241.235:80>

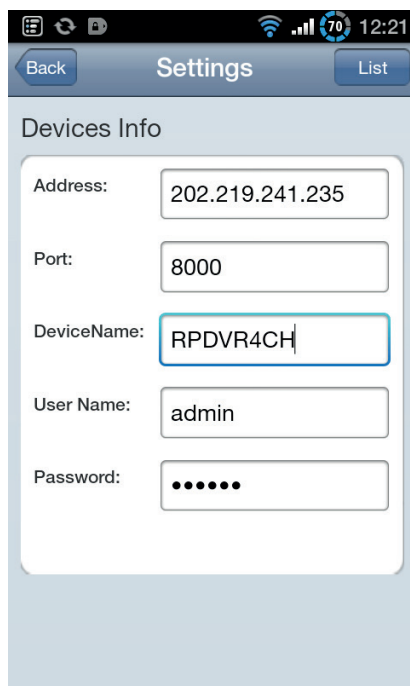
- To access your DVR using a browser in the local network, just replace the external IP address with the local IP address, in this example, 192.168.1.88)
- See last page for instructions on how to install the Active X control if you are having problems accessing the web client.

## ANDROID/ IPHONE MOBILE PHONE SOFTWARE

You can access your DVR on a variety of mobile devices. Search for the free **IMSEYE** software on the Android Market or the iPhone App Store.



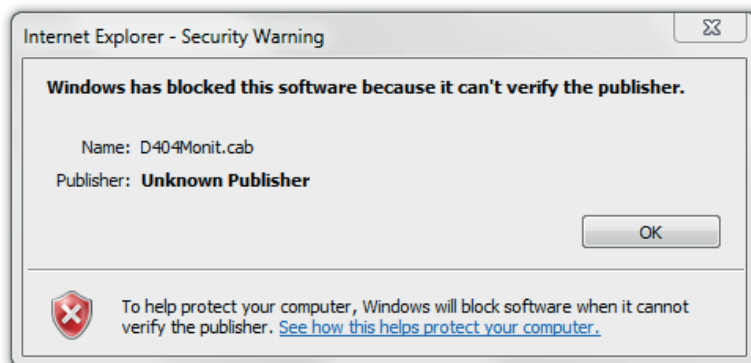
DVR CLIENT SETUP SCREEN FOR IPHONE



DVR CLIENT SETUP SCREEN FOR ANDROID

**NAME:** Give your DVR any name you like.  
**ADDRESS:** Use the EXTERNAL IP address you wrote down on page one.  
**PORT:** Put in the TCP PORT you wrote down on page one.  
**USER NAME:** The same username to login to your DVR (default: admin)  
**PASSWORD:** The same username to login to your DVR (default: 123456)

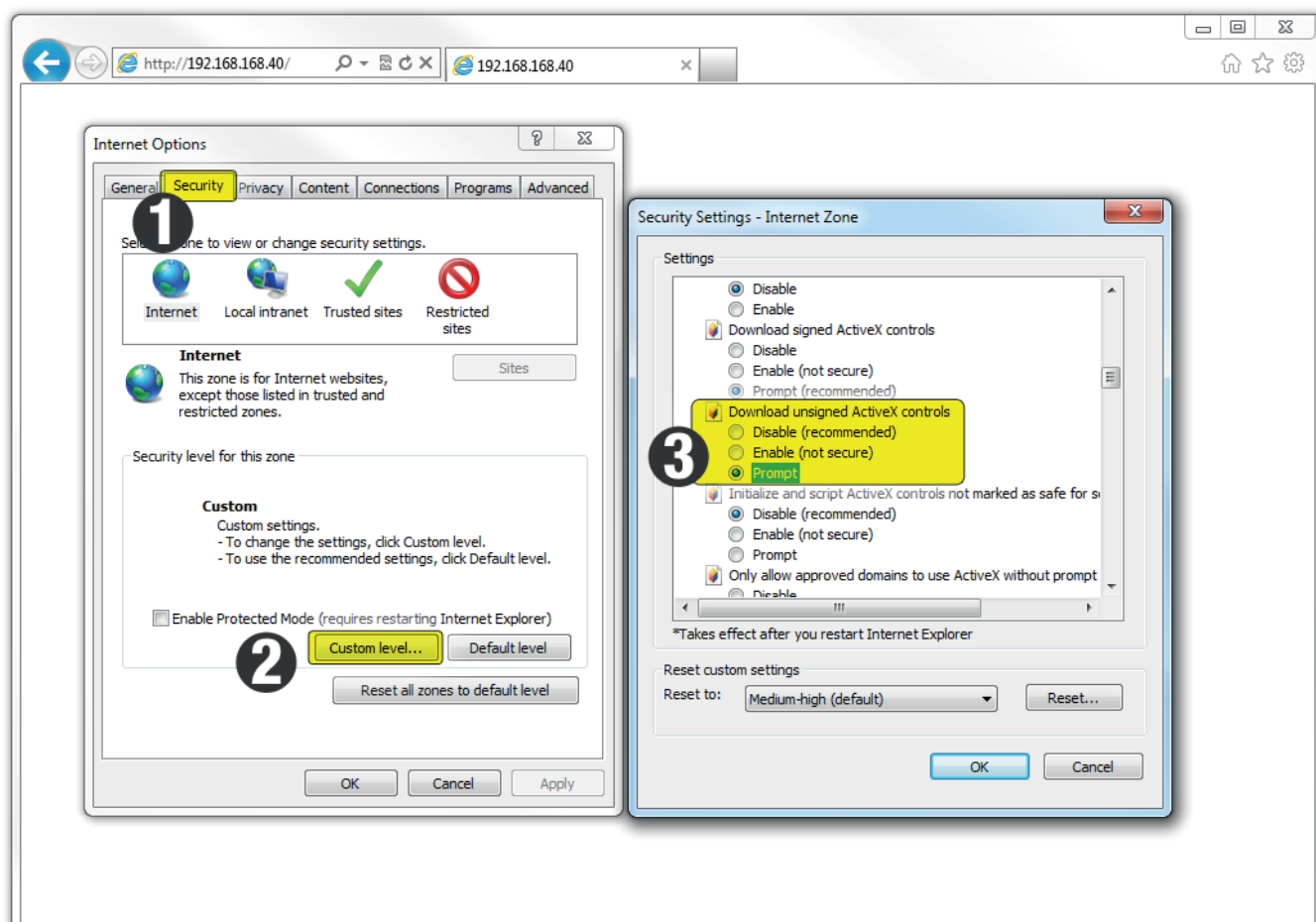
## HOW TO INSTALL THE ACTIVE X CONTROL TO ACCESS THE WEB CLIENT



Follow this guide if you get the above error when trying to access your DVR via Internet Explorer.

Open up Internet Explorer and from the Tools menu click on Internet Options.

(If you are unable to see the Tools menu, press the ALT key on your keyboard to bring up the file menu.)



1. Click on the SECURITY tab
2. Choose the CUSTOM LEVEL option
3. Scroll down to DOWNLOAD UNSIGNED ACTIVE X CONTROLS and change it from disabled to PROMPT.

Hit OK and accept the security prompt.

Now reload the DVR page and install the ACTIVE X client. Follow the prompts and allow permissions where needed.

You should now be able to enter your DVR details and access it from any Windows PC with Internet Explorer.